

**Smile, Talk, Laugh with confidence  
...Eat with comfort**



**With implants to retain your dentures eating is a pleasure.**

**What more could you want?**

*Imagine being able to go to  
your favourite restaurant  
and order anything  
off the menu?*

**What more could you want?**

*No longer having to just pick  
soft foods or swallowing them  
nearly whole?*

**Fed up of using denture  
fixative?**

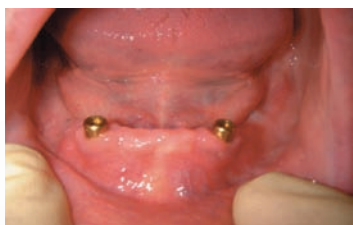
*You wont need it with implants.*



## SMILE & EAT with CONFIDENCE

### Implants - Dentures

Implants are titanium roots that your own bone grows round; there are no known allergies or reactions to titanium. The titanium root or implant has a connector that joins the implant to the denture. Many people have dentures (20% of the population) and many have problems with them being loose. It might be possible to replace the removable dentures with fixed teeth on implants. If this is not appropriate then the patients own denture can be attached to some implants so that it is still removable and easy to clean and maintain.



By placing two standard implants in the lower jaw as show on the left, it is no longer possible for the patient to move the lower denture with their tongue. Patients' whole way and quality of life changes, as they are no longer having to eat only soft foods or not chewing their food properly and swallowing large pieces of food leading to stomach problems.



A more economic option is available for retaining a lower denture. This involves placing 4 mini implants in the lower jaw. These take about



1 hour to fit and the patient leaves wearing their own teeth. It is possible to help hold in place a small partial denture with mini implants, they are not exclusive to full dentures. Once the implants are in place the cost of new dentures is little more than a normal set of dentures would be.

**Please see our fee guide for  
further information**

**Huddersfield Dental Implants & Cosmetics**

Albert Yard, Huddersfield, HD1 2BN

Tel 01484 537222 web-[www.hdic.co.uk](http://www.hdic.co.uk) e:[implants@hdic.co.uk](mailto:implants@hdic.co.uk)

**All work shown carried out by Dr Robin Warne B.Ch.D. M.Sc. Implant Dentistry**